

# **Stamperland Parish Church of Scotland, Clarkston**



# **DRAFT**

# **ANNUAL REPORT**

# **2019**

**Congregation No: 160885**

**Charity No: SC003155**

## Reference and Administrative Information

Charity Name: Stamperland Parish Church of Scotland, Clarkston  
Charity Registration Number: SC003155  
Congregation Reference No: 160885  
Contact Address: Mrs Kay Bolton  
Stamperland Parish Church  
Stamperland Gardens  
Glasgow  
G76 8LJ

### Trustees

### Elders

Mrs Catherine Baird  
Miss Janet Barr  
Rev Scott Blythe  
Mrs Kay Bolton  
Norman Bolton  
Connell Cranston  
Mrs Jane Curror  
John Curror  
Mrs Agnes Fisher

Alastair Graham  
Mrs Evelyn Graham  
Mrs Janet Herriot  
Ronald Kirkwood  
Mrs Anne MacKenzie  
Fraser Mackintosh  
Mrs Margo Neilson  
Mrs Marie Owens  
Steven Owens

William Paterson  
Raymond Russell  
Scott Russell  
Miss Grace Scott  
Mrs Sheena Skelton  
Miss Janet Stewart  
Keith Walton

### Members of Congregation

Roy Allan  
Mrs Karen Cramb  
Mrs Jean Cranston  
George Fairweather  
Alan Henderson

Colin Kirkwood  
Mrs Alison Macfarlane  
Fraser Neilson  
Miss Elizabeth Robb

Mrs Jackie Silcock (resigned  
4/12/2019)  
Norman Walker  
Mrs Margot Young

### Principal Office-bearers

Minister: Rev Scott Blythe  
Session Clerk: Mr Norman Bolton  
Church Treasurer: Mrs Kay Bolton

### Independent Examiner

Alexander Johnston, CA  
9 Williamwood Park  
Netherlee  
Glasgow  
G44 3TD

### Bankers

Royal Bank of Scotland  
Giffnock (B) Branch  
158 A Fenwick Road  
Giffnock  
Glasgow  
G46 6XB

## **Trustees' Annual Report Year ended 31<sup>st</sup> December 2019**

### **STRUCTURE, GOVERNANCE AND MANAGEMENT**

#### **Governing Document**

Stamperland Parish Church of Scotland, Clarkston is administered in accordance with the terms of the Unitary Constitution.

#### **Recruitment and Appointment of Trustees**

Under the Unitary Constitution all elders are charity trustees. Elders are chosen from those members of the church who are considered to have the appropriate gifts, skills and commitments to undertake, along with the minister, responsibility for the life of the congregation in all its aspects including worship, mission and service to the wider community. The minister is elected by the congregation and inducted by Presbytery and is automatically a trustee. When there is no minister, Presbytery appoint an Interim Moderator; the Interim Moderator is automatically a trustee.

Additional trustees are appointed from within the congregation and members of the congregation are invited to nominate individuals who have the skills and commitment to contribute to the management of the church, particularly in relation to the maintenance and development of the fabric of the church buildings and to the financial affairs of the church. These additional trustees may be elected and appointed at the Stated Annual Meeting of the Congregation or co-opted to serve as trustees.

#### **Organisational Structure**

Kirk Session meetings attended by all trustees are held approximately eight times a year. Moderated by the minister (or interim moderator if the church is vacant) these meetings provide the forum for decision making. Attendance is open to all members of the church and all members may contribute to debates. However, only elders and additional trustees have decision-making authority.

Within the Kirk Session there are nine permanent committees each with specific remits to inform, oversee and manage the work of the church. In addition there are trustees who have responsibility for overseeing Health & Safety (H&S), protection of vulnerable groups (PVG) and food hygiene. A chart showing the organisational structure is presented on page 7.

### **OBJECTIVES AND ACTIVITIES**

The Church of Scotland is Trinitarian in doctrine, Reformed in tradition and Presbyterian in polity. It exists to glorify God and to work for the advancement of Christ's Kingdom throughout the world. As a national church, it acknowledges a distinctive call and duty to bring the ordinances of religion to the people in every parish of Scotland through a territorial ministry. It co-operates with other churches in various ecumenical bodies in Scotland and beyond.

In Stamperland Parish Church, Sunday Worship, to which anyone has access, takes place every Sunday morning. The sacrament of Holy Communion is celebrated four times a year. The church is open on a Wednesday morning offering a period of quiet reflection and contemplation. Additional services take place at significant times, for example, Easter and Christmas.

Christian Education for youth takes place on Sunday mornings with the BB Bible Class and Sunday School departments catering for those aged between three and 18 years. For adults, there is a House Group which meets fortnightly for Bible study. The minister's provision of teaching and discussion material as well as church membership instruction classes provides a means for the Christian education of adults.

#### **VISION AND MISSION STATEMENT**

To bring God's message.  
To be the focus of people's lives.  
To be seen as something people want to be a part of.  
To reach out to people, supporting them, showing care, compassion, love and fun.  
Our church should be a joy to belong to, a meaningful part of the community.  
Our church should move with the times and always be relevant ... both here and in the wider world.

The Guild meets every Tuesday evening from October to March and offers a varied and highly enjoyable programme of speakers, music and crafts, tea and fellowship. The Guild is open to all people.

The church seeks to support and minister to all people within the parish and beyond and we therefore seek to engage with people in a variety of ways. Over the past seven or eight years we have made the church premises available for the “Heart for Art” project which uses creative art to provide therapy for people with dementia, enhancing their feelings of self worth and achievement. Classes are held on Friday afternoons. In relation to interaction with youth, our minister serves as a chaplain to Williamwood High School and Netherlee Primary School. Netherlee Primary school is welcomed into the church for Christmas, Easter and end-of-term services.

The church supports Youth Organisations including The Boys’ Brigade, The Scouts and The Guides which, together, provide a wide range of activities enjoyed by over 200 young people each week. Membership of The Scouts and The Guides is open to all young people regardless of their religious beliefs.

The church and associated organisations arrange a variety of social and fund-raising activities; these include Spring and Christmas Fairs, concerts, quizzes and a range of social events, all of which are open to the general public. Occasional events are specifically targeted to encourage families with young children to attend.

Hall accommodation is provided for a range of community activities and occasional meetings of local community groups. The halls are used by organisations including Baby Sensory, which provides sensory development activities for babies and parents, Sounds International, an adult choir drawing its membership from people of diverse nationalities and religious backgrounds and EROS Musical Society, an amateur dramatics society based in Clarkston

The safety and security of all people attending and using the church and associated halls is of great importance. The church has a co-ordinator for the Protection of Vulnerable Groups (PVG) and all adults who have contact with children and young people in the Youth Organisations have clearance through Disclosure Scotland. CCTV recordings are made of people entering and leaving the halls. Health and Safety is an agenda item at all meetings of the Kirk Session and safety procedures are regularly reviewed. PVG is an agenda item at all regular meetings of the Kirk Session.

Members of the church are active within the local community and are involved with community councils, neighbourhood watch schemes, health boards, etc..

Members are also active in supporting various charities and organisations both by giving of their time and through financial donations. There is direct involvement with charities such as Christian Aid, with homes for the elderly including, specifically, Williamwood House, and with organisations such as The Lodging House Mission. Members of the church arrange a monthly service at Clarkston Care Home.

As a parish church there is a desire to support those in the parish in times of stress and the church is always there to offer various types of support to those living in the parish. Often the need for support and its nature is confidential but an obvious example is support at a time of bereavement.

## ACHIEVEMENTS AND PERFORMANCE

Following the linkage of Stamperland Church with Netherlee Parish Church in September 2018 the two churches have shared a single minister – Rev Scott Blythe. Early in 2019 Miss Marie Wilson was appointed as Pastoral Assistant to the linked churches and throughout the year has developed her role to support the pastoral needs of the church community.

On the majority of Sundays in 2019 separate morning services were held in both Stamperland and Netherlee churches. Joint communion services were held (two in each church) and services over the Easter and Christmas periods were split between the two churches with the congregations of the two churches worshipping together. Joint services also took place on Remembrance Sunday and on other occasions.

The year 2019 ended with 270 members on the Congregational Roll, six fewer than the previous year. Four members died. Two moved elsewhere. There were no new members.

Only nine young people (plus two teenage helpers) were enrolled in Stepping Stones at the end of the year. This low number serves to highlight that the current arrangements of organisations, activities or events aimed at attracting the attendance of children on Sunday mornings are not being successful and require a radical re-think. In contrast, the uniformed organisations (Scouts, Guides and Boys’ Brigade) *have enjoyed an increase in numbers with the combined roll standing at 220 in December 2019. The number of youths attending the Scout Group is 72 with 34 being in the Scout and Explorer Scout sections. There are 83 girls in the Guide Association of whom 30 are members of the Guide company section. There is a total of 65 boys in the BB, 27 of whom are members of the Company section. The number of Anchor Boys and Junior members has increased markedly in the last two years reflecting a good response to a recruitment campaign and high levels of retention. Both Guides and Rainbows have waiting lists and all organisations would welcome additional adult leaders. The growing numbers of young people attending the uniformed organisations is very encouraging and is testament to the hard work of the leaders of the organisations and the inspiring activities they provide.*

The numbers attending ‘Sunday Break’ at the close of morning worship are steady at around two dozen and a similar number of people attend ‘Open Door’ on Wednesday mornings. Holy Week services were well attended as was the early morning Dawn Easter Day Service in Linn Park. There was a good attendance at the family Christmas Eve service.

During the year, the minister conducted three baptisms, one wedding and eight funerals at Stamperland. Support for bereaved families is demonstrated in a number of ways including through the “Flower Ministry” in which the flowers on display in the church sanctuary at the Sunday morning service are distributed to people within the congregation or parish as a token of remembrance or thanks. Additionally, the church maintains a Book of Remembrance recording the names of deceased persons who have a link with the church and parish. The Book of Remembrance is on public display.

Through a variety of initiatives the church strives to maintain its reputation and promote its profile within the parish. The church’s presence on the internet, including Facebook and YouTube, is indicative of new and different forms of contact. Wireless internet connection is available within the church hall accommodation. Our hall accommodation is available to community groups and organisations providing services to people living in our community.

As well as supporting charitable activities within the church and parish, £1300 was raised through Special Collections and Fund Raising Events for the specific causes or charities. Details of amounts raised are summarised in Note 8 on page 13.

In addition to purely financial donations, a large quantity of tins and packets of food donated at the Harvest Thanksgiving service was taken to the Lodging House Mission. In the autumn a significant number of filled shoeboxes were donated to Blytheswood Care. The church continued its support for the East Renfrewshire Food Bank in Barrhead with church members making regular donations throughout the year and special donations of gifts at Christmas.

## FINANCIAL REVIEW

In common with most churches, our membership has been in decline for the last 50 years. From a peak membership of 1,030 in 1959, the current membership of 270 is the lowest figure recorded since the establishment of the church in 1940. Over the last ten years membership has reduced from 400 – a reduction of one third. With reductions in membership, the financial support of the church falls on an ever smaller number of members and, in particular, those members who are actively involved in the life and work of the church. Efforts have been made to develop a stewardship culture within the church whereby members are encouraged to regularly review and increase their offerings. At the same time, close control of expenditure has been maintained. For the past five years the manse has been let through the General Trustees and the rental income has provided a welcome additional source of income.

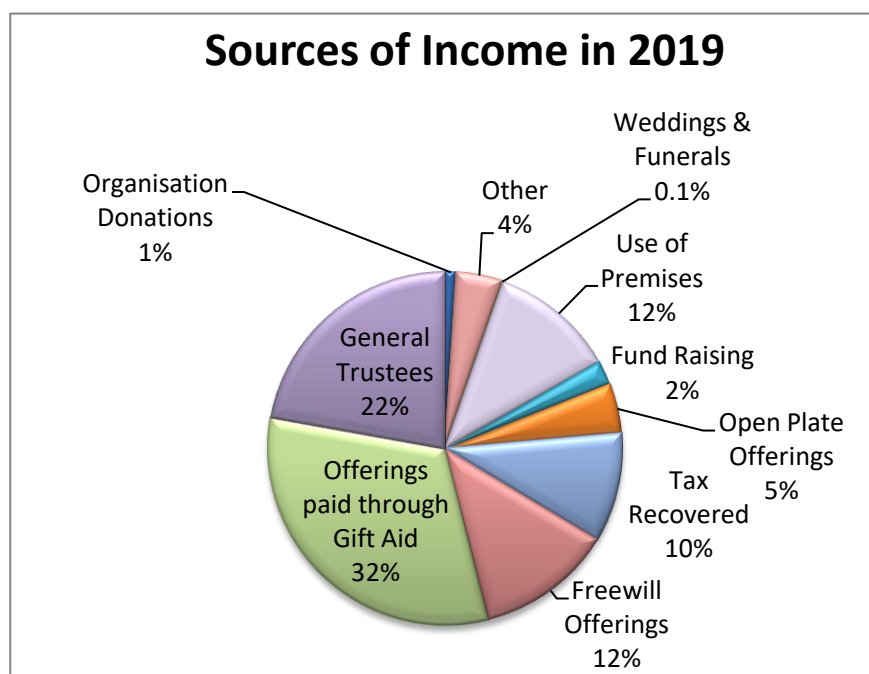
### Analysis of Income

The chart on the right shows a breakdown of the principal sources of income in 2019.

Offerings paid through Gift Aid along with the tax recovered contributed 42% of income. These offerings represent the single most important source of income. Freewill offerings and open plate together accounted for 17% of income. In 2019, total offerings were over £3,000 lower than the previous year.

Income raised by “Fund Raising” was £2,313, a little more than the previous year.

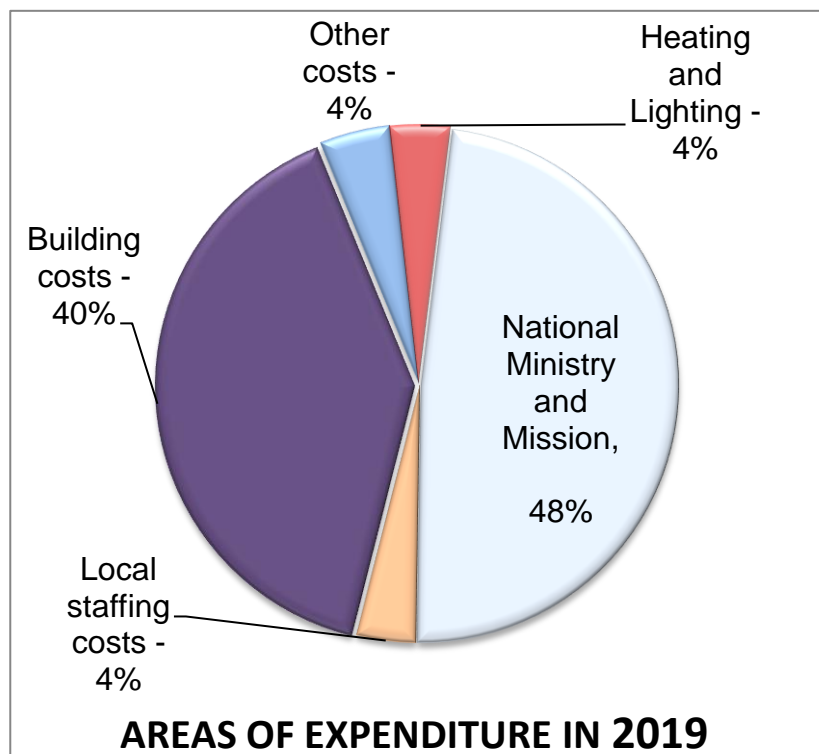
Income from the use of premises by third parties was £12,163. Whilst this amount was £1300 less than the previous year rental income represents twelve per cent of income. The largest contributor to rental income is





Baby Sensory, an organisation which provides sensory development activities for babies from birth to three years of age. They occupy the large and small halls every Monday morning and afternoon. Sounds International use the large hall on Tuesday evenings with EROS Musical Society using this accommodation on Wednesday evenings. A variety of keep-fit classes take place and halls have been made available to various community and local groups for events ranging from art exhibitions to children's parties. There are frequent enquiries from a wide range of organisations seeking to hire accommodation on weekday evenings. However, our halls are already fully used every evening.

### Analysis of expenditure



The chart on the left illustrates the major categories of expenditure in 2019.

The greatest expense is the payment of £57,169 to the National Ministry and Mission Fund and to the Presbytery of Glasgow. This amount includes our contribution to the stipends of ministers and locum ministers within the Church of Scotland, to the wider work of the Church of Scotland and to Glasgow Presbytery. We have no control over our allocation and expenditure on these items represented virtually half of our total expenditure.

In 2019, expenditure associated with the buildings was £47,278. This amount includes fabric repair and maintenance as well as building insurances, Council Tax for the manse, cleaning of the church and halls.

The main items of fabric expenditure were renewing the roof covering of the Large Hall (£13,800), the installation of new, plastic-framed, double glazed windows throughout most of the hall accommodation (£15,750), refurbishment of concrete steps leading to the front door of the church (£4,000) and painting of ceiling in the large hall (£2,000).

We are conscious of our environmental footprint. Expenditure on central heating has reduced over the last seven years. The cost of gas consumed by the central heating boilers was, at £2807, almost ten per cent lower than the previous year and over £1,000 lower than the cost of gas used in 2014. Whilst the price of gas fell between 2014 and 2017 it has increased over the last two years and the reduction in expenditure owes much to careful attention to ensuring that, whenever possible, heating is restricted to areas of the church buildings actually being occupied by organisations. The ongoing replacement of old radiators with more efficient units has also contributed to savings and the recent installation of double glazed windows is anticipated to further improve heating efficiency in coming years.

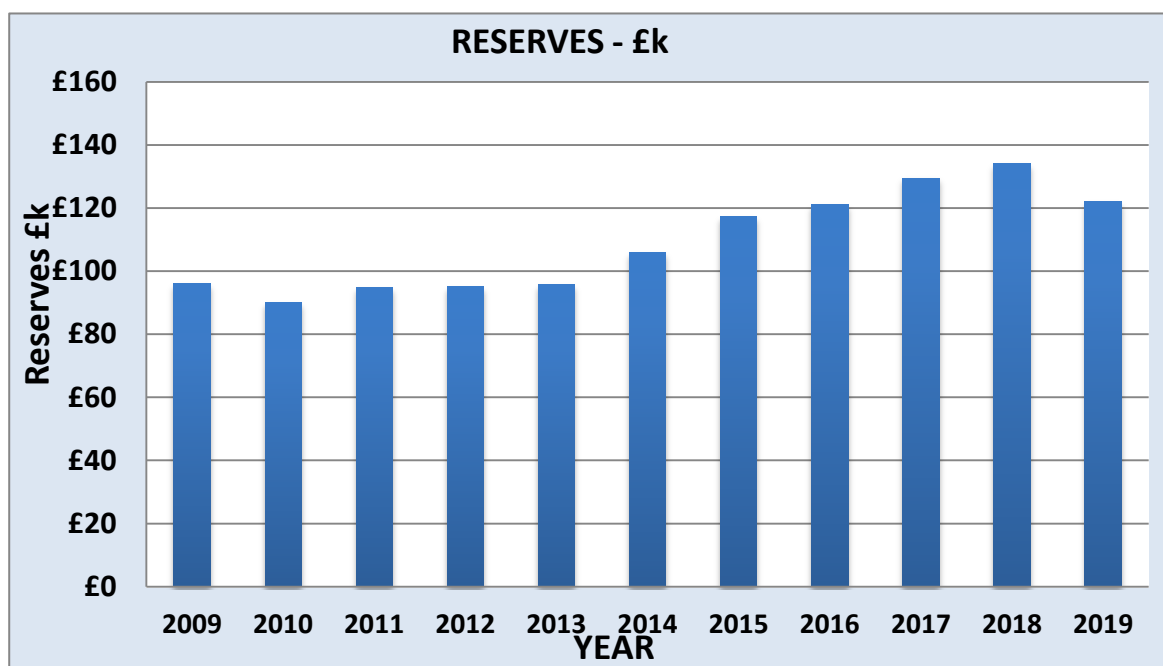
By the end of 2017 most of the fluorescent tube lights in the church had been replaced with modern, efficient LED lights to provide not only improved illumination but also savings in electricity consumption. The cost of electricity consumed in 2019 was less than the average cost of the four previous years.

### Reserves Policy

It has been the Trustees' policy to have a reserve in the General Fund of about two month's normal expenditure and, in addition, to have sufficient funds in the Fabric Fund to enable essential repairs to be undertaken and to facilitate the purchase of major capital items such as duplicators, amplifiers, computers, etc. should they become unserviceable and require to be replaced.

The church has been fortunate in receiving a number of legacies. Some of the money from these legacies has been used to cover the deficit between the normal, regular income and the normal, regular expenditure and to enable significant upgrading work to be undertaken.

At the end of 2019 the total bank and cash balances stood at £122,685. The General Fund balance was £7,698; the balance in the Fabric Fund was £109,000. All money in the Copper Fund was spent and the fund ended 2019 with a zero balance. The balance in the Kean Bequest (a restricted fund specified to be used for the purpose of Elder Training) was £1,261. The value of the investment in the Church of Scotland Investor's Trust Growth Fund at 31<sup>st</sup> December 2019 was £4,726.



It has been the Trustees' policy to maintain a Roof Contingency Fund within the Fabric Fund to meet the cost of renewing the waterproof covering on the flat roof of the sanctuary. The existing roofing material was replaced over 25 years ago and was guaranteed for only ten years. The Trustees have allocated £51,000 to the Roof Contingency Fund. The Fabric Fund will be used to meet costs of the electrical upgrading work identified in the EICR as well as other ongoing maintenance activities.

Since autumn 2014 the Stamperland Manse, 109 Ormonde Avenue, Netherlee, has been let to a tenant. Rental income, minus expenses, is paid directly to the General Trustees in Edinburgh. Sums of money from the accumulated rental income can be drawn to meet costs associated with maintainance of the fabric of Stamperland church and the manse. During 2019 a total of £23,300 was drawn from the accumulated funds and at 31<sup>st</sup> December 2019, the funds held by General Trustees on our behalf amounted to £1,334.

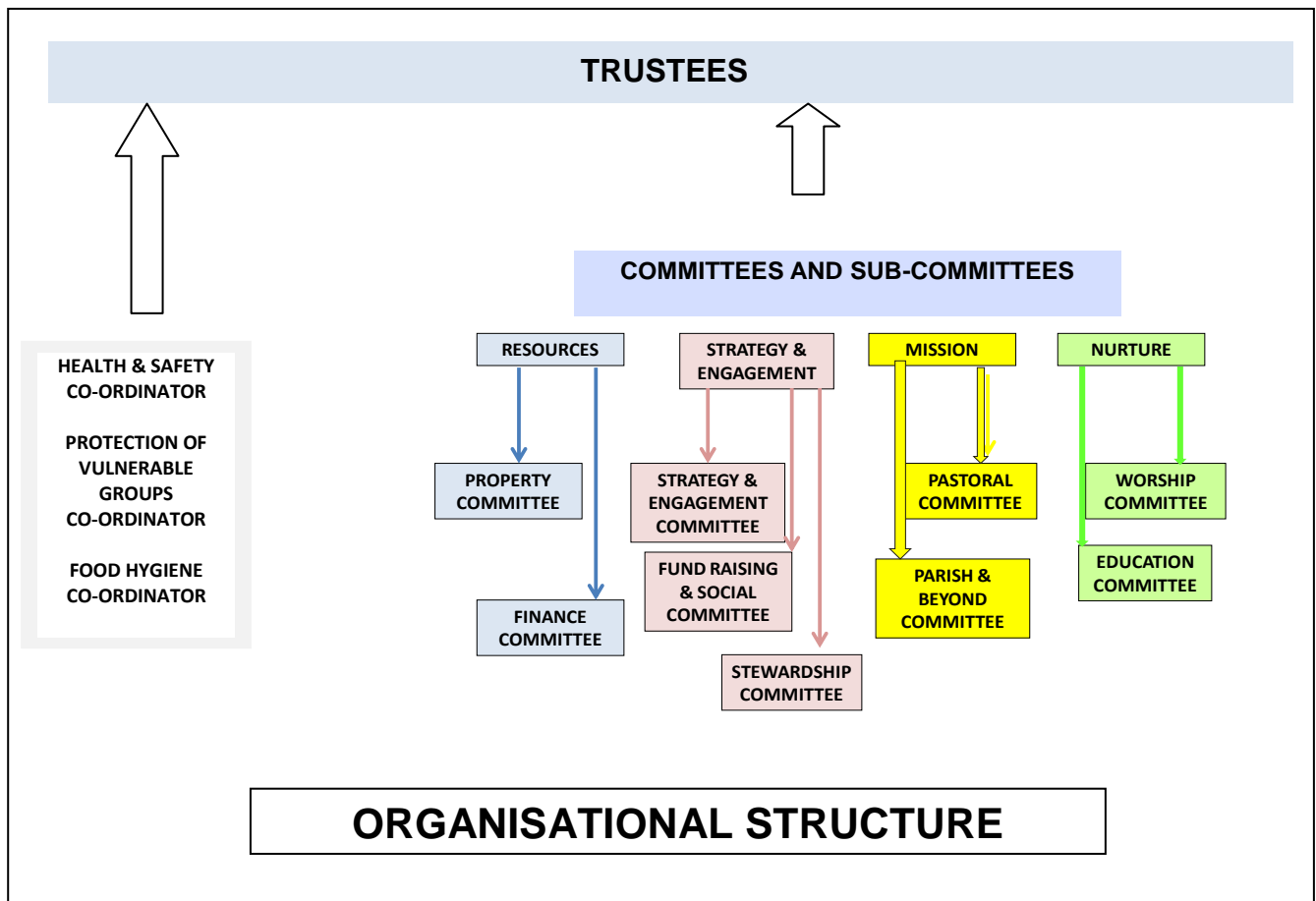
## Statement of Trustees' Responsibilities

The Trustees must prepare financial statements which give sufficient detail to enable an appreciation of the transactions of the Church during the financial year. The Trustees are responsible for keeping proper accounting records which, on request, must reflect the financial position of the Church at that time. This must be done to ensure that the financial statements comply with the Charities and Trustee Investment (Scotland) Act 2005, the Charities Accounts (Scotland) Regulations 2006 (as amended) and the Regulations For Congregational Finance approved by the General Assembly of the Church of Scotland in 2016. They are also responsible for safeguarding the assets of the Church and must take reasonable steps for the prevention and/or detection of fraud and other irregularities.

Approved by the Trustees and signed on their behalf,

A Norman Bolton  
Session Clerk

Date ..... January 2020





## **Stamperland Parish Church of Scotland, Clarkston SC003155**

### **Independent Examiner's Report to the Trustees of Stamperland Parish Church of Scotland, Clarkston**

I report on the accounts of the charity for the year ended 31<sup>st</sup> December 2019 which are set out on pages 9 to 13.

#### **Respective responsibilities of trustees and examiner**

The charity's trustees are responsible for the preparation of the accounts in accordance with the terms of the Charities and Trustee Investment (Scotland) Act 2005 and the Charities Accounts (Scotland) Regulations 2006.

The charity trustees consider that the audit requirement of Regulation 10(1) (d) of the Accounts Regulations does not apply. It is my responsibility to examine the accounts as required under section 44(1) (c) of the Act and to state whether particular matters have come to my attention.

#### **Basis of independent examiner's statement**

My examination is carried out in accordance with Regulation 11 of the Charities Accounts (Scotland) Regulations 2006. An examination includes a review of the accounting records kept by the charity and a comparison of the accounts presented with those records. It also includes consideration of any unusual items or disclosures in the accounts, and seeks explanations from the trustees concerning any such matters. The procedures undertaken do not provide all the evidence that would be required in an audit, and consequently I do not express an audit opinion on the view given by the accounts.

#### **Independent examiner's statement**

In the course of my examination, no matter has come to my attention

1. which gives me reasonable cause to believe that in any material respect the requirements:
  - to keep accounting records in accordance with Section 44(1)(a) of the 2005 Act and Regulation 4 of the 2006 Accounts Regulations, and
  - to prepare accounts which accord with the accounting records and comply with Regulation 9 of the 2006 Accounts Regulations have not been met, or
2. to which, in my opinion, attention should be drawn in order to enable a proper understanding of the accounts to be reached.

Alexander Johnston  
Chartered Accountant

9 Williamwood Park  
Netherlee  
Glasgow  
G44 3TD

Date 9th February 2020